



# **ViBRANT**

*Virtual Biodiversity*

**ViBRANT: linking communities and services**

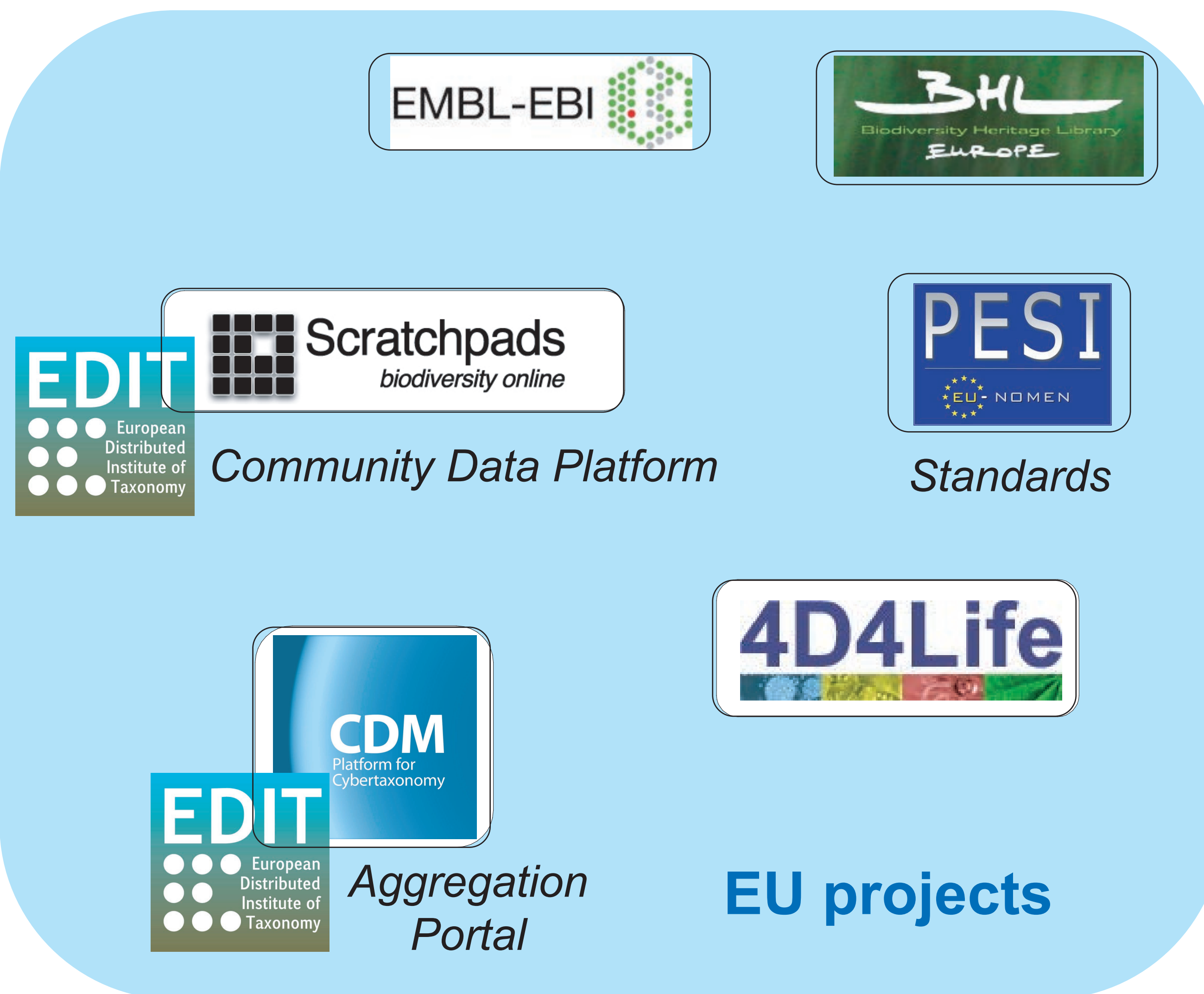
Dave Roberts, Simon Rycroft & Vince Smith

# Pre-ViBRANT landscape

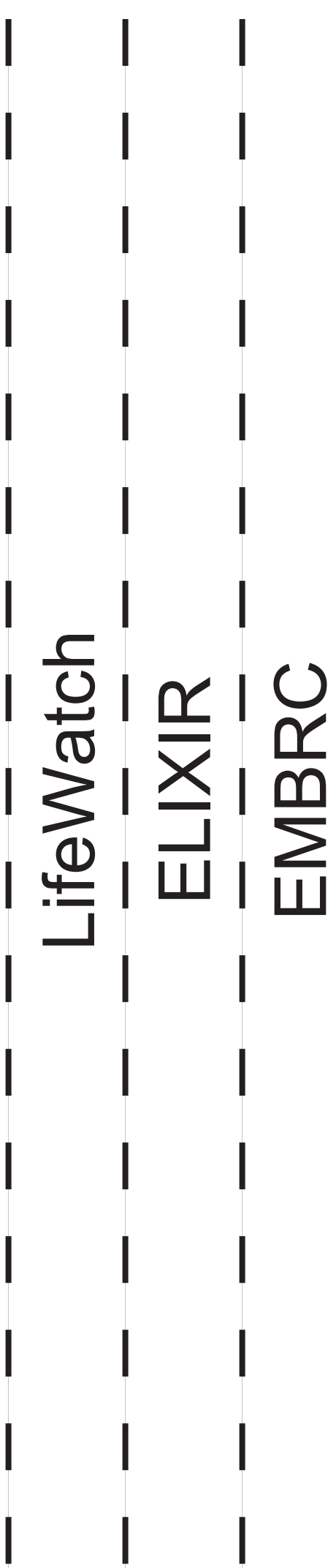
Complex  
Fragmented



Occurrence &  
vocabulary tools



ESFRI



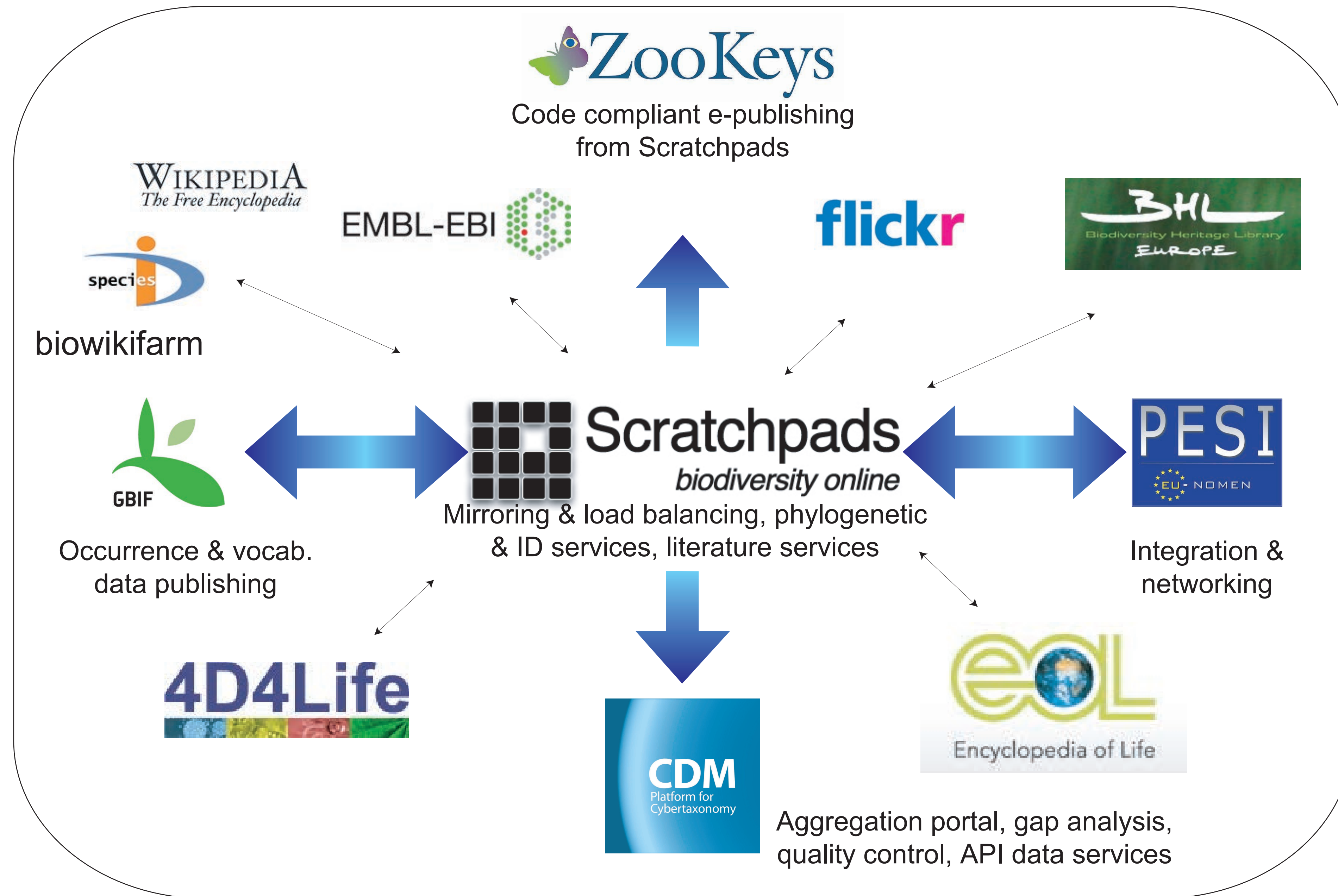


# Post-ViBRANT landscape

## INTEGRATED SUPPORT

Support Services (help desks, courses, networking)

Sociological research & feedback



## ESFRI

LifeWatch (Prototype service centre)

ELIXIR (EBI metadata services)

EMBRC (Support for marine research communities)

## ***“overall objective”***

to increase the mobility of data and to make use of shared web resources wherever possible using the Scratchpads as a hub to link a community's data with a range of services.

## ***“making the Scratchpads better”***

More reliable & sustainable (e.g., distribute the servers, simple administration, distribute developers, development sandbox)

More functional (e.g., phylogenetic & publication services)

Easier to use (better workflows)

Prettier (better graphical design - more intuitive)

More integrated (for data stored inside & outside the Scratchpad framework)

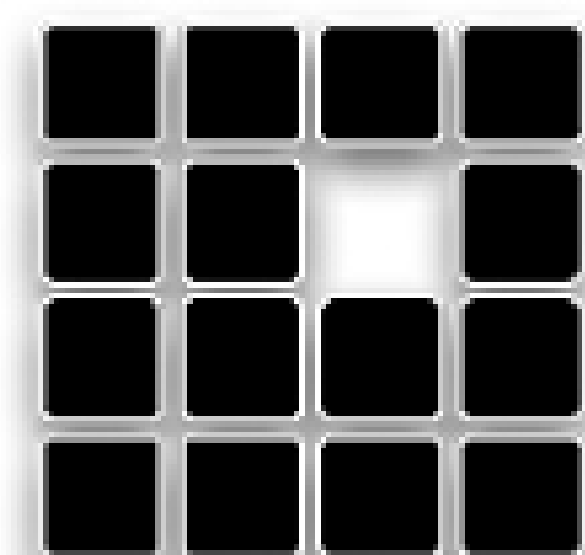
## ***“making natural history better”***

Easier to compile, manage and reuse your data

Easier to find and reuse other peoples data

Promoting your data inside & outside the taxonomic community

Getting people to work for you (crowdsourcing)

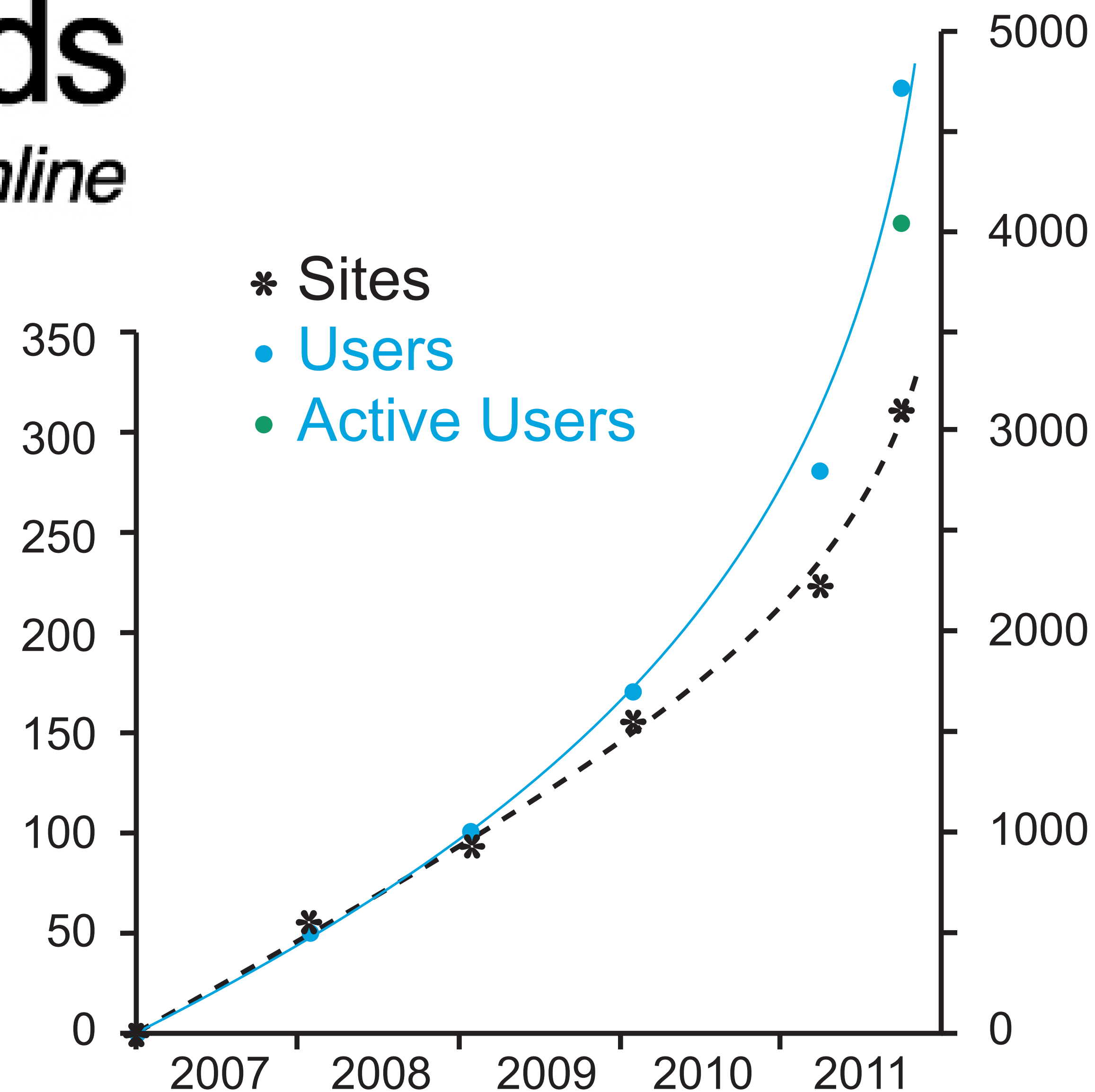


# Scratchpads

*biodiversity online*

Virtual machine hosted on VMWare vSphere 4  
 8GB Ram  
 Intel Xeon E5630 (4 x Cores)  
 260GB of Storage  
 Tivoli Backup every 24 hours  
 Debian 6.0.3  
 PHP - 5.3.3  
 MySQL - 5.1.49  
 Apache - 2.2.16

Nodes: 390,092 on 14 Oct 2011

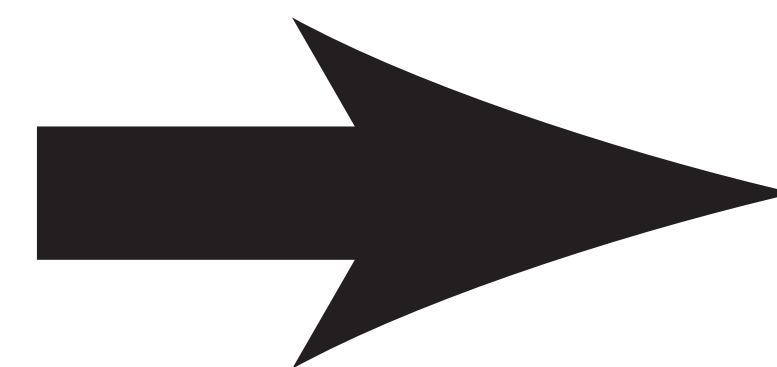




# A website for you & your community



Your data



Your web site



#### Scratchpad Training Courses

The one-day courses are intended to help current and prospective Scratchpad owners develop their site building skills. You will be given the opportunity to learn best practice and gain a better understanding of what the Scratchpads can do for you and your research community. The focus of the **basic course** lies on adding various kinds of data, on generating taxon pages and on communication with other users. Our goal is to provide a taste of what the sites can do, and allow you to independently explore the site after the event. The focus of the **advanced course** lies on the import of data, creating of custom content types and views, and managing of projects (groups). No course registration fee is required but participants are responsible for their own travel and subsistence expenses when attending the scratchpad course.

**In the framework of the EU-funded ViBRANT project, the Scratchpad team is setting up the 2012 training programme. Stay tuned!**

In the meantime, if you have any suggestions on where and when to offer

#### Application

Places on these courses will be limited to about 8-12 so that participants criteria:

- to get as many institutions represented as possible, we will default to
- to those who are already managing a Scratchpad or say that they intend
- some level of IT competence, so that the concepts we're discussing
- those who are registered with an associated conference.

**Training manuals and other training files** are available for self training if you **Note. Users of Internet Explorer 6 will experience problems with this**

#### Help

##### • Help

The help system is integrated into the Scratchpads and accessible on each site via the 'Help' menu link and via question mark icons. Check there first if you're struggling to do something specific on your site. For a more structured approach on learning how to deal with Scratchpads the help system includes training manuals.

##### • Sandbox

This is a regular Scratchpad which can be used to test out any Scratchpad function. You can login, create, delete and edit any node, user or other content on the site. Any changes you make are wiped once every six hours (check for when the next wipe will occur at the top of the Sandbox page).

##### • Contact Us

If all else fails and/or you need support, found a bug or would like to request new features, get in touch with us directly. The best way is to create an **Issue** by clicking on the 'Issues' tab that appears on the right margin of your Scratchpad when you are logged in. Click on 'Search for/Report an issue' to access the Issues system and then click on 'Create a new issue'. If you don't want to use the Issues system you can also directly [contact us](#).

##### • Training

We're offering basic and advanced training courses for current and prospective Scratchpad maintainers. The [training materials](#) can also be used by people who can't come to one of our courses.

##### • Ambassador program

We are recruiting a select group of Scratchpad Ambassadors to be the official local representative of the Scratchpad community. Please [register](#) to take part in this program.

Printer-friendly version

The Sandbox was last updated 3 hours 10 min ago. You have approximately 2 hours 49 min before the site is wiped.  
[Login](#) to the site using the username: "test" and the password: "pass"



## Scratchpad Sandbox

Home > [Create content](#)

[Simple](#) | [Taxonomy](#)

Go!

### Create Specimen (DwC 1.2.1)

Required

Taxonomy

Collection

Miscellaneous

Location

Record: \*

Specimen

[sandbox.scratchpads.eu/help/scratchpadify\\_help/Specimen?popup=1](#)

[Help](#) > [Scratchpad Help](#) > [Scratchpad Help](#) > [Content](#) > [Content types](#)

## Specimen

Specimen data in a Scratchpad conform to the Darwin Core (version 1.2.1) format recommended by TDWG (Biodiversity Information Standards) and

[Search for/Report an issue](#)

#### Recent Issues:

[Sorting images not working](#)

Hi, I have uploaded a number of images that I tag to different levels in the classification hierarchy (FGO, Sciaroidea). When I sort the images on a page in a specific order this order is not stored/kept permanently. Next time I log in and view the page again the order of images has changed back or to a new random order. Can this be fixed?

[TUI not working](#)

[OpenID failed](#)

[Custom content tagging bug.](#)

[iSpecies features not working](#)

[Custom content text field bug...](#)

[Is something up with the git repository today?](#)

[slow server, batch image uploading working poorly,](#)

[Using a scratchpad for a systematics organization with its](#)

[Future of Taxon Description and Drupal Taxonomy in Drupal](#)

#### Help

Not sure what you are doing, try the [Scratchpad Help Page](#).

#### Ambassadors programme

##### Scratchpad Ambassadors

Scratchpad Ambassadors are enthusiastic experienced Scratchpad communities of researchers can build, share, manage and publish

##### Become an Ambassador

We are recruiting a select group of Scratchpad Ambassadors to lead this programme register [here](#).

##### Spread the word



You can spread the word about Scratchpads at your institution using our [Scratchpad training presentation](#). Feel free to adapt the presentation to your needs.

More info and presentations on Scratchpads:  
[Scratchpads, an introduction](#)  
[About Scratchpads](#)

ini

n Sat, 04/05/2008 - 13:14

y resembles *Colpidium colpoda* which is included within the key to sewage ciliates. The diagram in Ganner and Berger (1999) illustrates the on the two species. *Colpidium kleini* tends to be smaller and slimmer than *Colpidium colpoda*. Other illustrations can be found in Ganner and



Can we use web data to identify the range of audiences for the Scratchpads? \*\*

<u>Myspecies.info (1 Oct 10 - 31 Mar 11)</u>	<u>Number</u>	<u>%</u>
All ISPs*	9212	100
ISPs* excluding commercial providers	2316	25

\* Average time on site >4 sec.

<u>Categories of ISPs</u>	<u>Number</u>	<u>%</u>
Research/Education/R&D	1933	83
Government	204	9
Company	50	2
Non-profit	41	2
Health	39	2
Art/culture/media/publishing	25	1
Travel	23	1
Other	1	0.04

\*\* Data presented at Altmetrics workshop of the ACM WebSci '11





[Home](#)
[About](#)
[Sites](#)
[Training](#)
[Blogs](#)
[Help](#)
[Ambassadors](#)
[Issues](#)
[Develop](#)



*Pyrolirion albicans* (Amaryllidaceae)

### Welcome

eMonocot aims to create a global taxonomy working on monocots providing tools for identification, eMonocot builds upon existing taxonomic (EDIT) such as [Palm CATE-Araceae](#) and [GrassBase](#)

### When complete, eMonocot will

1. Enable the identification of monocot flowering plants)
2. Provide a wealth of information
3. Address separately the needs of ecologists and conservation taxonomists
4. Link together monocot taxonomic smaller institutions without access
5. Provide a model for the web 2.0

## A social networking tool to build, share & publish information on the diversity of life...



**Overview**

Image Galleries

eBooks

eJournals

DNA, Phylogeny & Specimens

Societies & Organizations

Taxonomy & Literature

### VIBRANT Scratchpads!

Scratchpads are part of the [EU funded VIBRANT](#) project, and the [NERC funded e-Monocot](#) project. As part of these initiatives we will be releasing a [new version of the Scratchpads](#) in January 2012. We also commit to fixing bugs and adding minor new features during 2011. Watch this space for news on the redevelopment.

[Read more](#)



### Scratchpad Ambassador program

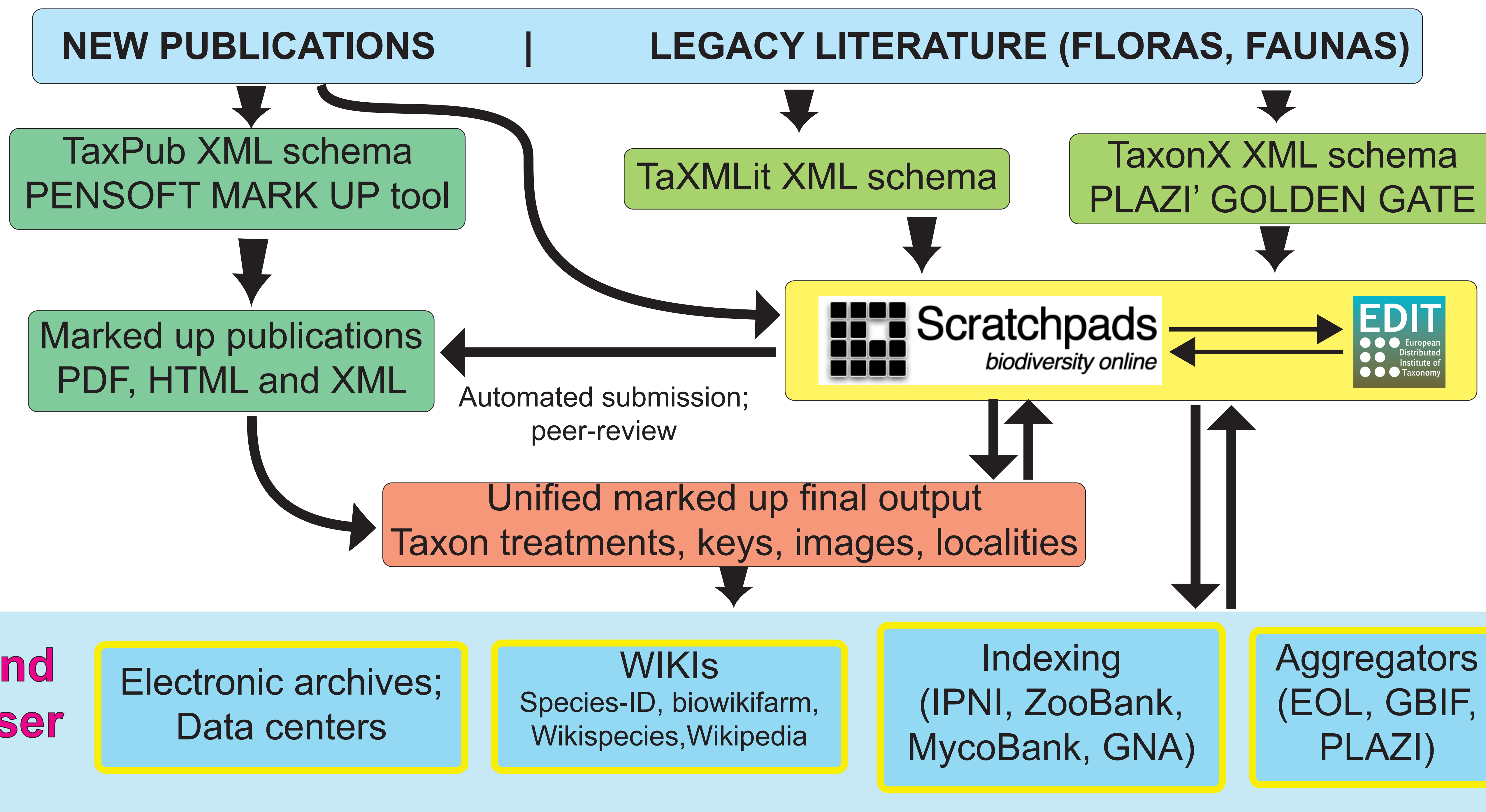
**NEWS:** The VIBRANT project has launched its new [Scratchpad Ambassador program](#) and is recruiting users to be the official local representative of the Scratchpad community.



	<div><div><div><div><div></div><div>SYSTEM</div></div></div><div><div>&gt;</div><div><div>Site information</div><div>Change site name, e-mail address, slogan, default front page, and number of posts per page, error pages.</div></div></div><div><div>&gt;</div><div><div>Actions</div><div>Manage the actions defined for your site.</div></div></div><div><div>&gt;</div><div><div>Cron</div><div>Manage automatic site maintenance tasks.</div></div></div></div></div>
	<div><div><div><div></div><div>USER INTERFACE</div></div></div><div><div>&gt;</div><div><div>Shortcuts</div><div>Add and modify shortcut sets.</div></div></div></div>
	<div><div><div><div></div><div>DEVELOPMENT</div></div></div><div><div>&gt;</div><div><div>Performance</div><div>Enable or disable page caching for anonymous users and set CSS and JS bandwidth optimization options.</div></div></div><div><div>&gt;</div><div><div>Logging and errors</div><div>Settings for logging and alerts modules. Various modules can route Drupal's system events to different destinations, such as syslog, database, email, etc.</div></div></div><div><div>&gt;</div><div><div>Maintenance mode</div><div>Take the site offline for maintenance or bring it back online.</div></div></div><div><div>&gt;</div><div><div>Devel settings</div><div>Helper functions, pages, and blocks to assist Drupal developers. The devel blocks can be managed via the <a href="#">block administration</a> page.</div></div></div></div>
	<div><div><div><div></div><div>WEB SERVICES</div></div></div></div>



# Mark up, publication, dissemination and use of taxonomic information





# COMBER

Citizens' Network for the  
Observation of Marine Biodiversity

## User login

Username: \*

Password: \*

Log in

Create new account

Request new password

OR

 Login with Facebook

## Your dive count!

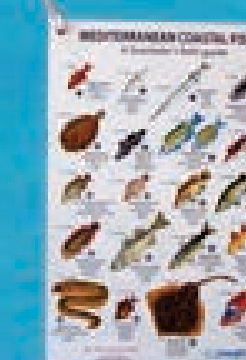
We have already gathered data for 141  
dives submitted by 53 users - that is a  
total of 1966 species observations, but  
we need your help to increase these  
numbers!

Are you a diver? Do you like nature? Then we need your help! We offer you to participate in an international scientific project to engage amateur naturalists in a process of recording marine biodiversity. It's easy, all we ask from you is your passion for life on earth and a bit of your time before and after your dive.

Follow a short seminar before your dive about the Cretan fish fauna and how to identify different species. Afterwards you will go on a dive accompanied by marine scientists who will teach you how to spot various fish. By using the BioWatch underwater fishcard you will be able to identify the species yourself

During your dive you will identify and record the species you encounter. Your underwater field guide allows you to note down right on the spot which and how many fish you observe.

After your dive, you will share your data through an interactive online-database. We will show you how to create an account on this site to be able to enter your observations. These data, of great value to the scientific community, will be used to assess the state of the marine biodiversity along our coasts... and of course we will acknowledge your efforts in future scientific outcomes!



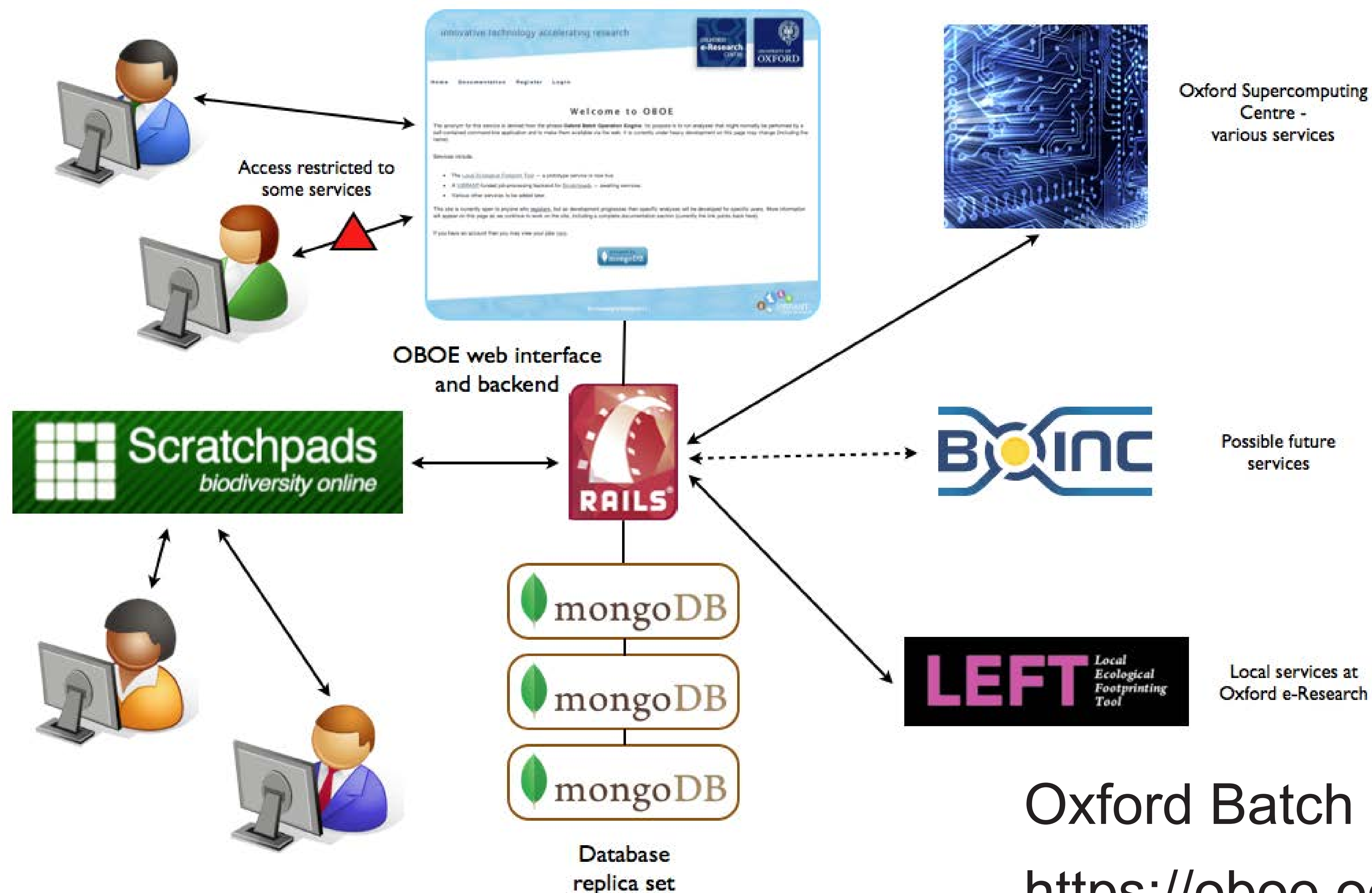
Using the  
**BioWatch**  
EXPLORING SEA LIFE  
underwater fishcard

<http://www.gopetition.com/petitions/support-the-hellenic-centre-for-marine-research-hcmr.html>

## Users

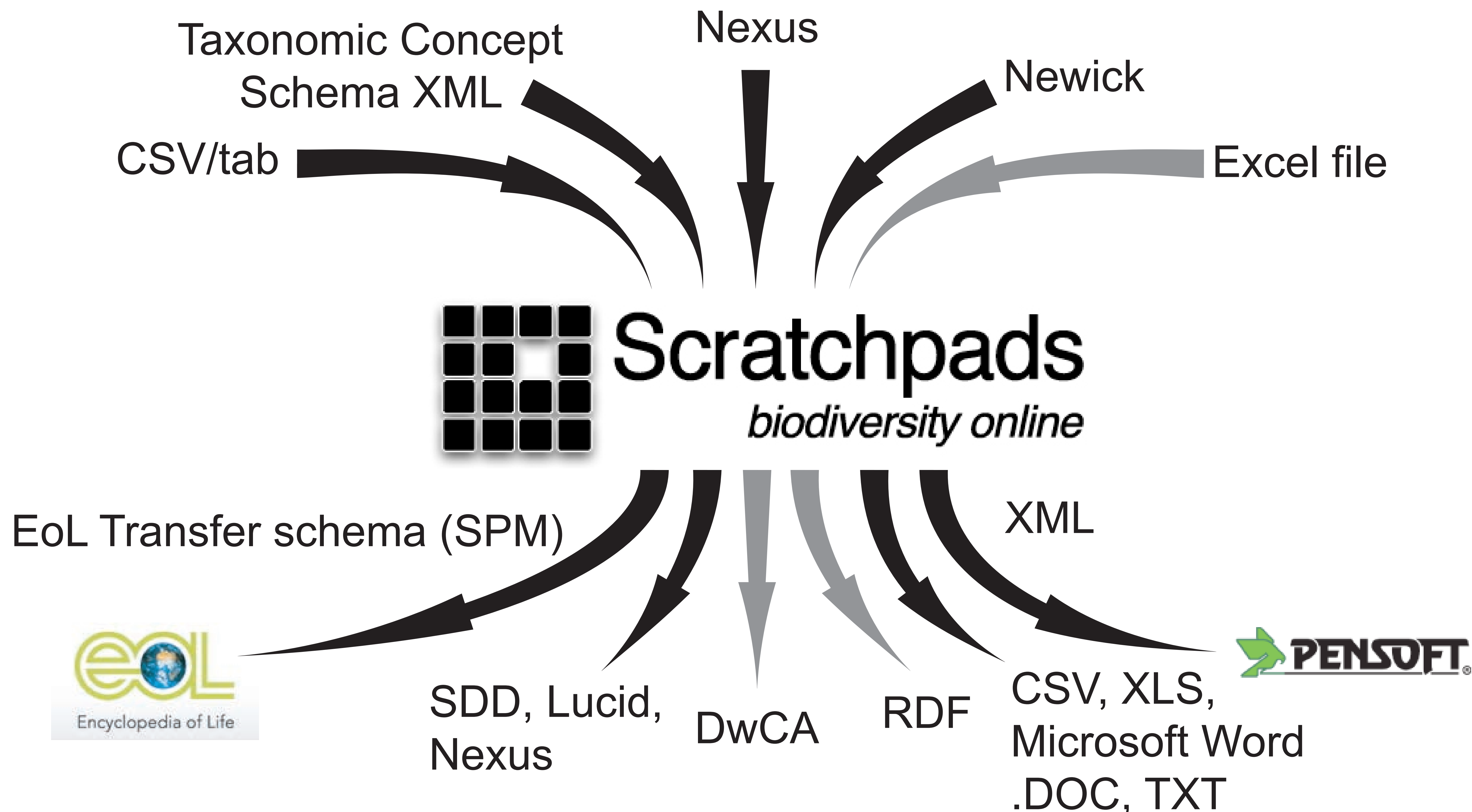
## Middleware

## Services



Oxford Batch Operations Engine  
<https://oboe.oerc.ox.ac.uk/>





# Citation and credit

ZooKeys 50: 17-28 (2010)  
doi: 10.3897/zookeys.50.539  
www.pensoftonline.net/zookeys

FORUM PAPER



## Streamlining taxonomic publication: a working example with Scratchpads and ZooKeys

Vladimir Blagoderov<sup>1</sup>, Irina Brake<sup>1</sup>, Teodor Georgiev<sup>2</sup>, Lyubomir Penev<sup>3</sup>,  
Dave Roberts<sup>1</sup>, Simon Rycroft<sup>1</sup>, Ben Scott<sup>1</sup>, Donat Agosti<sup>3</sup>, Terrence Catapano<sup>4</sup>,  
Vincent S. Smith<sup>1</sup>

### Authors & Sources

- ☐ Irina Brake
- ☐ BHL
- ☐ Flickr

Create Citation



Helping you to find,  
access, and reuse data

close or Esc Key

Reference

Irina Brake, BHL, Flickr. Retrieved on Sun, 2011-10-16 16:57. **Milichiidae**  
online <http://milichiidae.info/citations/63>

Permalink

<http://milichiidae.info/citations/63>



**Thank you for your  
attention.  
Any questions**



**e-mail: [enquiries@vbrant.eu](mailto:enquiries@vbrant.eu)**

**<http://vbrant.eu>**

**<http://scratchpads.eu>**