



Oxford Batch Operation Engine
<https://oboe.oerc.ox.ac.uk/>



Creative Commons BY-NC-SA
 3.0 Unported License.



OBOE is supported by the
 ViBRANT project.

Please cite this work as follows: In the text include *JobId:503e91ea13af5255370013de*, the output data files will be publically downloadable from the OBOE web site. In the reference list please cite *Caithness, N. and Thurston, M. 2012. Oxford Batch Operation Engine Services – LCC. https://oboe.oerc.ox.ac.uk.*

Submitter *neil.caithness@oerc.ox.ac.uk*
Title *Development*
Description *Demo*
Start time *30-Nov-2012 13:11:05*
Elapsed time *27.77 seconds*
Job ID *503e91ea13af5255370013de*
Version *0.0.0*

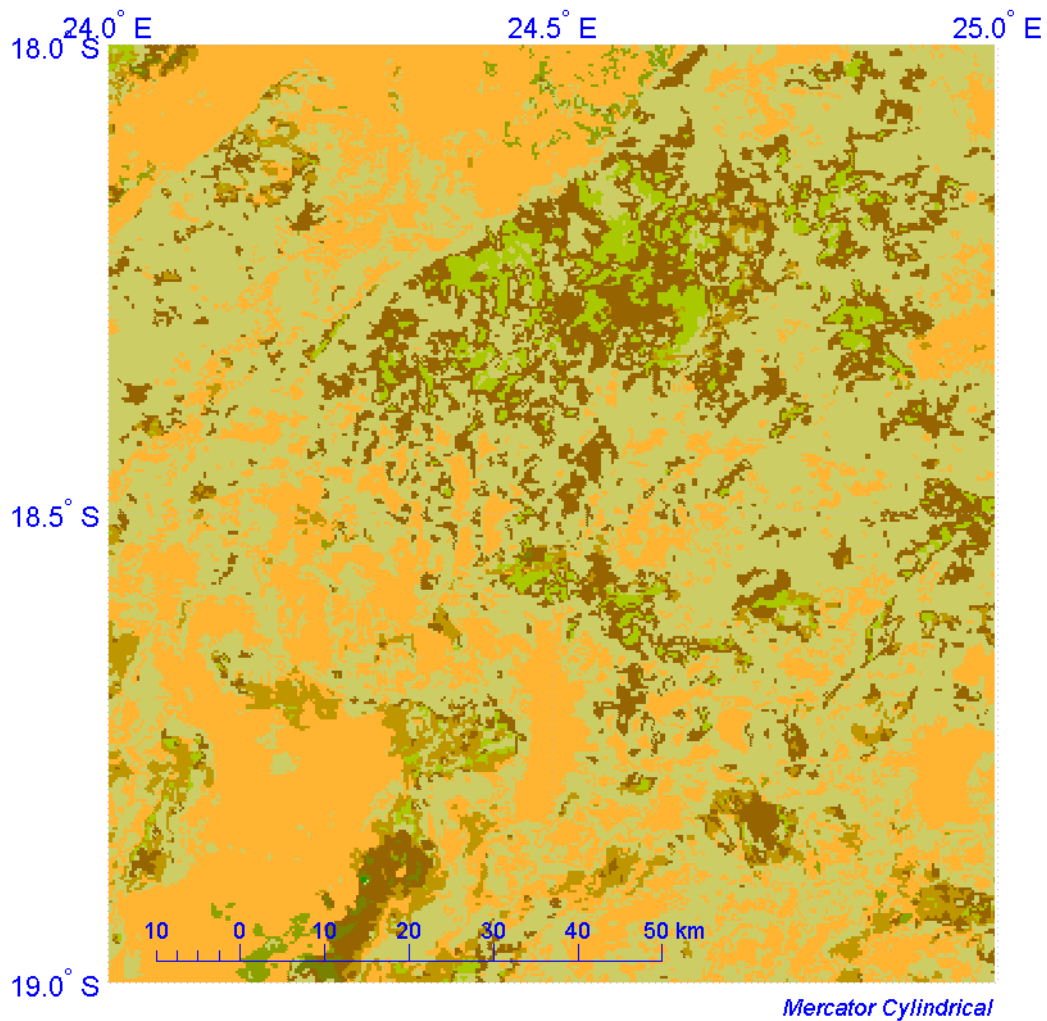


LCC: Land Cover Change

Copyright © 2010-2012

Figure 1

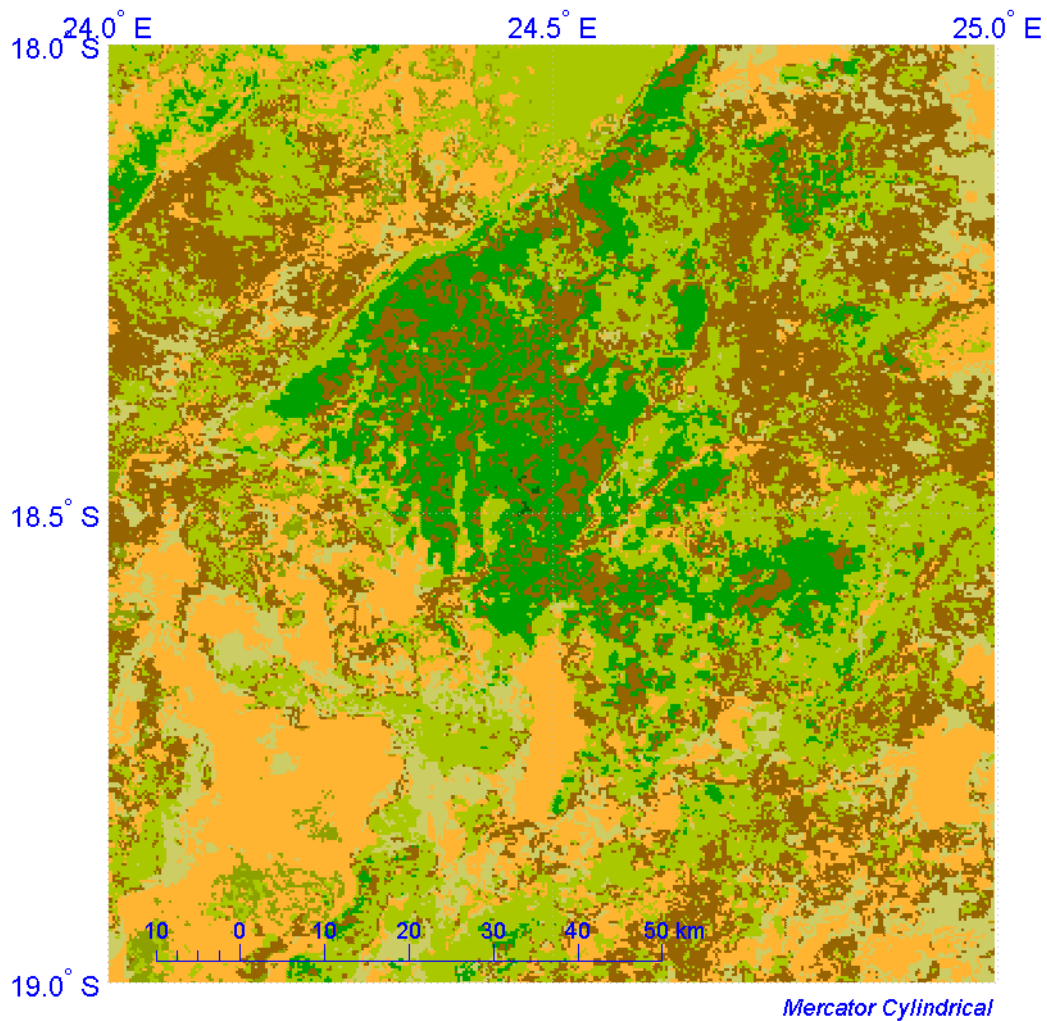
Land Cover in 2005



	11	Post-flooding or irrigated croplands (or aquatic)
	14	Rainfed croplands
	20	Mosaic cropland (50-70%) / vegetation (grassland/shrubland/forest) (20-50%)
48 %	30	Mosaic vegetation (grassland/shrubland/forest) (50-70%) / cropland (20-50%)
	40	Closed to open (>15%) broadleaved evergreen or semi-deciduous forest (>5m)
0 %	50	Closed (>40%) broadleaved deciduous forest (>5m)
3 %	60	Open (15-40%) broadleaved deciduous forest/woodland (>5m)
	70	Closed (>40%) needleleaved evergreen forest (>5m)
	90	Open (15-40%) needleleaved deciduous or evergreen forest (>5m)
0 %	100	Closed to open (>15%) mixed broadleaved and needleleaved forest (>5m)
1 %	110	Mosaic forest or shrubland (50-70%) / grassland (20-50%)
5 %	120	Mosaic grassland (50-70%) / forest or shrubland (20-50%)
13 %	130	Closed to open (>15%) (broadleaved or needleleaved, evergreen or deciduous) shrubland (<5m)
31 %	140	Closed to open (>15%) herbaceous vegetation (grassland, savannas or lichens/mosses)
	150	Sparse (<15%) vegetation
	160	Closed to open (>15%) broadleaved forest regularly flooded (semi-permanently or temporarily) - Fresh or brackish water
	170	Closed (>40%) broadleaved forest or shrubland permanently flooded - Saline or brackish water
	180	Closed to open (>15%) grassland or woody vegetation on regularly flooded or waterlogged soil - Fresh, brackish or saline water
	190	Artificial surfaces and associated areas (Urban areas >50%)
	200	Bare areas
	210	Water bodies (only if not a water body in 2009 – unchanged water bodies are used as the map mask)
	220	Permanent snow and ice
	230	No data (burnt areas, clouds, ...)

Figure 2

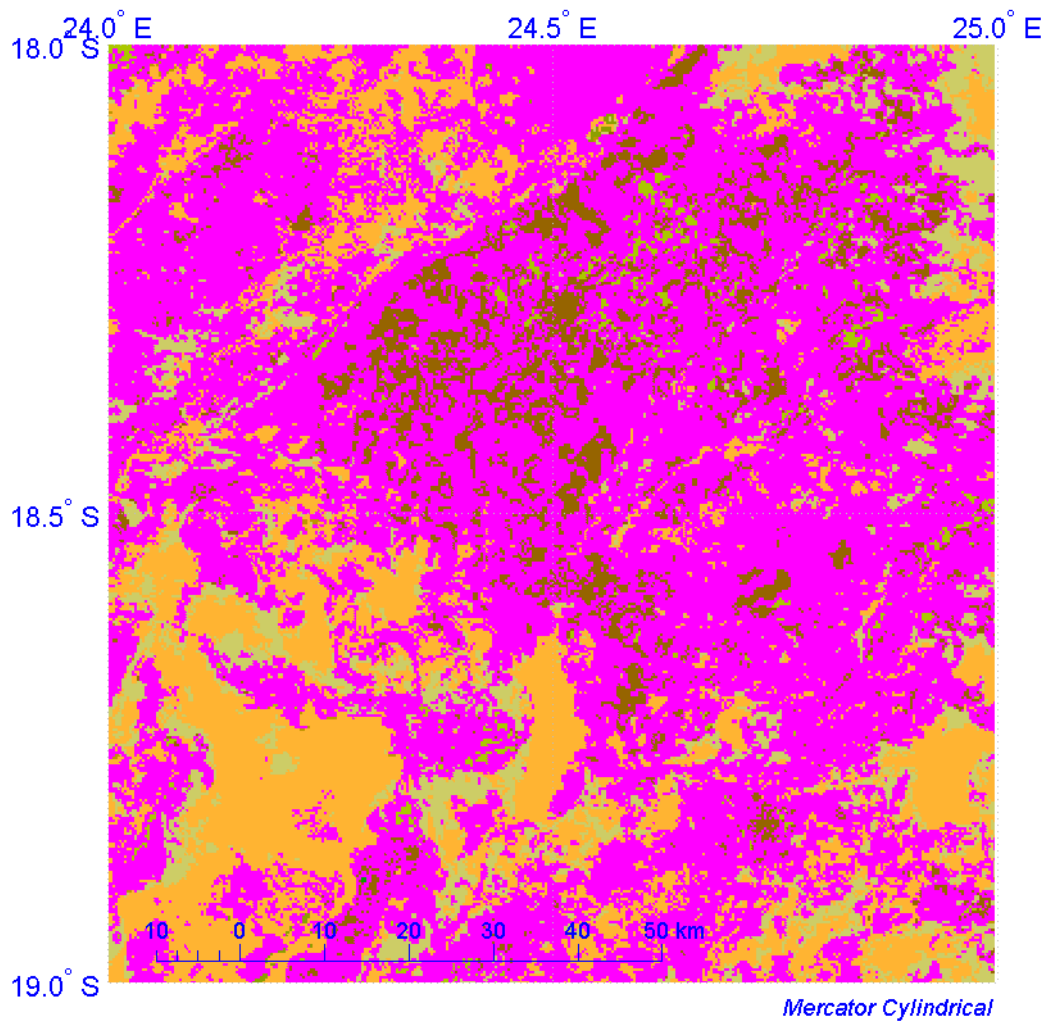
Land Cover in 2009



	11	Post-flooding or irrigated croplands (or aquatic)
	14	Rainfed croplands
	20	Mosaic cropland (50-70%) / vegetation (grassland/shrubland/forest) (20-50%)
10 %	30	Mosaic vegetation (grassland/shrubland/forest) (50-70%) / cropland (20-50%)
0 %	40	Closed to open (>15%) broadleaved evergreen or semi-deciduous forest (>5m)
11 %	50	Closed (>40%) broadleaved deciduous forest (>5m)
29 %	60	Open (15-40%) broadleaved deciduous forest/woodland (>5m)
	70	Closed (>40%) needleleaved evergreen forest (>5m)
	90	Open (15-40%) needleleaved deciduous or evergreen forest (>5m)
	100	Closed to open (>15%) mixed broadleaved and needleleaved forest (>5m)
2 %	110	Mosaic forest or shrubland (50-70%) / grassland (20-50%)
0 %	120	Mosaic grassland (50-70%) / forest or shrubland (20-50%)
26 %	130	Closed to open (>15%) (broadleaved or needleleaved, evergreen or deciduous) shrubland (<5m)
21 %	140	Closed to open (>15%) herbaceous vegetation (grassland, savannas or lichens/mosses)
	150	Sparse (<15%) vegetation
	160	Closed to open (>15%) broadleaved forest regularly flooded (semi-permanently or temporarily) - Fresh or brackish water
	170	Closed (>40%) broadleaved forest or shrubland permanently flooded - Saline or brackish water
	180	Closed to open (>15%) grassland or woody vegetation on regularly flooded or waterlogged soil - Fresh, brackish or saline water
	190	Artificial surfaces and associated areas (Urban areas >50%)
	200	Bare areas
	210	Water bodies (only if not a water body in 2005 – unchanged water bodies are used as the map mask)
	220	Permanent snow and ice
	230	No data (burnt areas, clouds, ...)

Figure 3

Land Cover – Change/No Change



	11	Post-flooding or irrigated croplands (or aquatic)
	14	Rainfed croplands
	20	Mosaic cropland (50-70%) / vegetation (grassland/shrubland/forest) (20-50%)
9 %	30	Mosaic vegetation (grassland/shrubland/forest) (50-70%) / cropland (20-50%)
	40	Closed to open (>15%) broadleaved evergreen or semi-deciduous forest (>5m)
0 %	50	Closed (>40%) broadleaved deciduous forest (>5m)
1 %	60	Open (15-40%) broadleaved deciduous forest/woodland (>5m)
	70	Closed (>40%) needleleaved evergreen forest (>5m)
	90	Open (15-40%) needleleaved deciduous or evergreen forest (>5m)
	100	Closed to open (>15%) mixed broadleaved and needleleaved forest (>5m)
0 %	110	Mosaic forest or shrubland (50-70%) / grassland (20-50%)
0 %	120	Mosaic grassland (50-70%) / forest or shrubland (20-50%)
7 %	130	Closed to open (>15%) (broadleaved or needleleaved, evergreen or deciduous) shrubland (<5m)
21 %	140	Closed to open (>15%) herbaceous vegetation (grassland, savannas or lichens/mosses)
	150	Sparse (<15%) vegetation
	160	Closed to open (>15%) broadleaved forest regularly flooded (semi-permanently or temporarily) - Fresh or brackish water
	170	Closed (>40%) broadleaved forest or shrubland permanently flooded - Saline or brackish water
	180	Closed to open (>15%) grassland or woody vegetation on regularly flooded or waterlogged soil - Fresh, brackish or saline water
	190	Artificial surfaces and associated areas (Urban areas >50%)
	200	Bare areas
	220	Permanent snow and ice
	230	No data (burnt areas, clouds, ...)
61 %	250	Class value change between 2005 and 2009

Figure 4

Patch Area in 2005

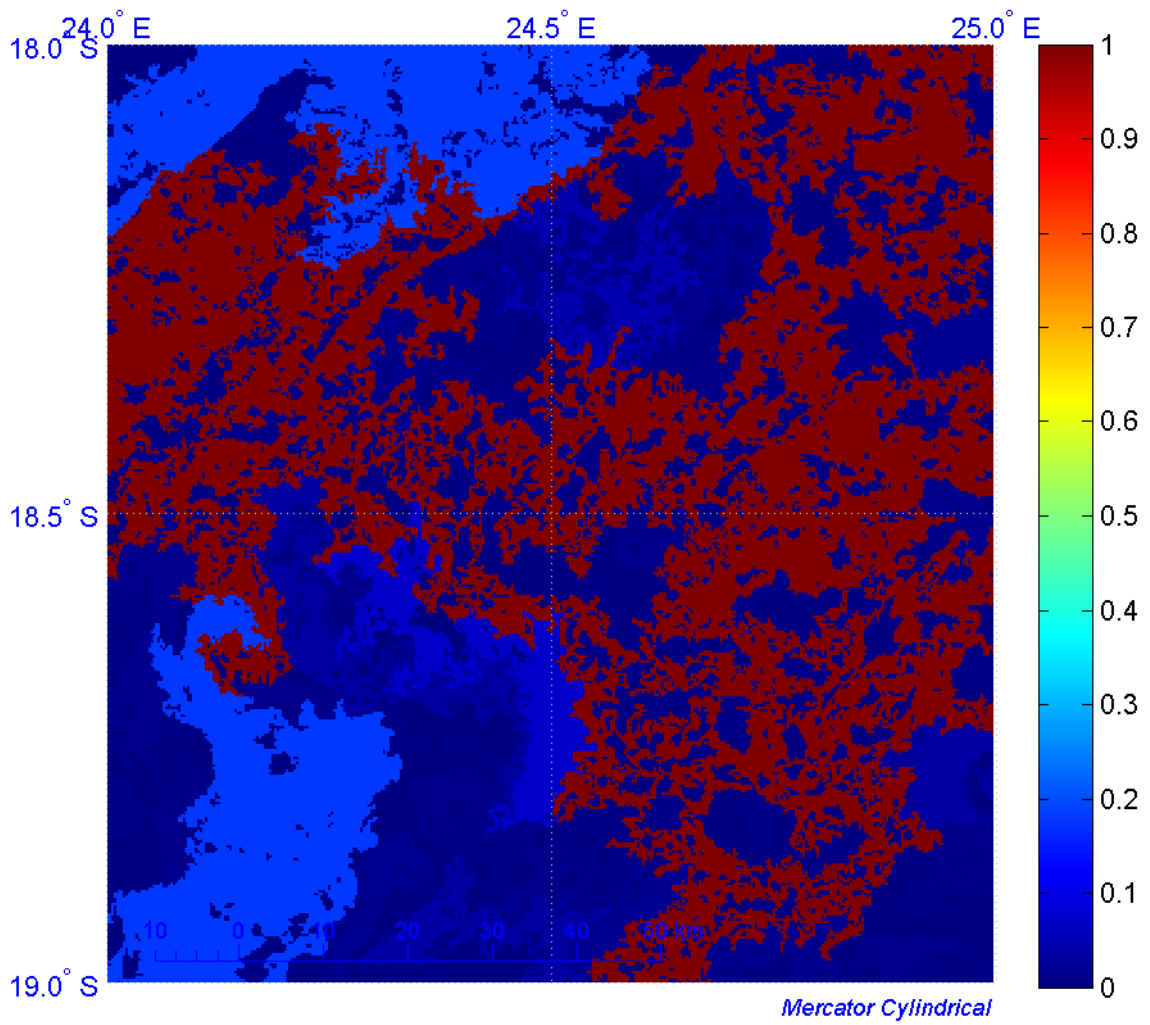
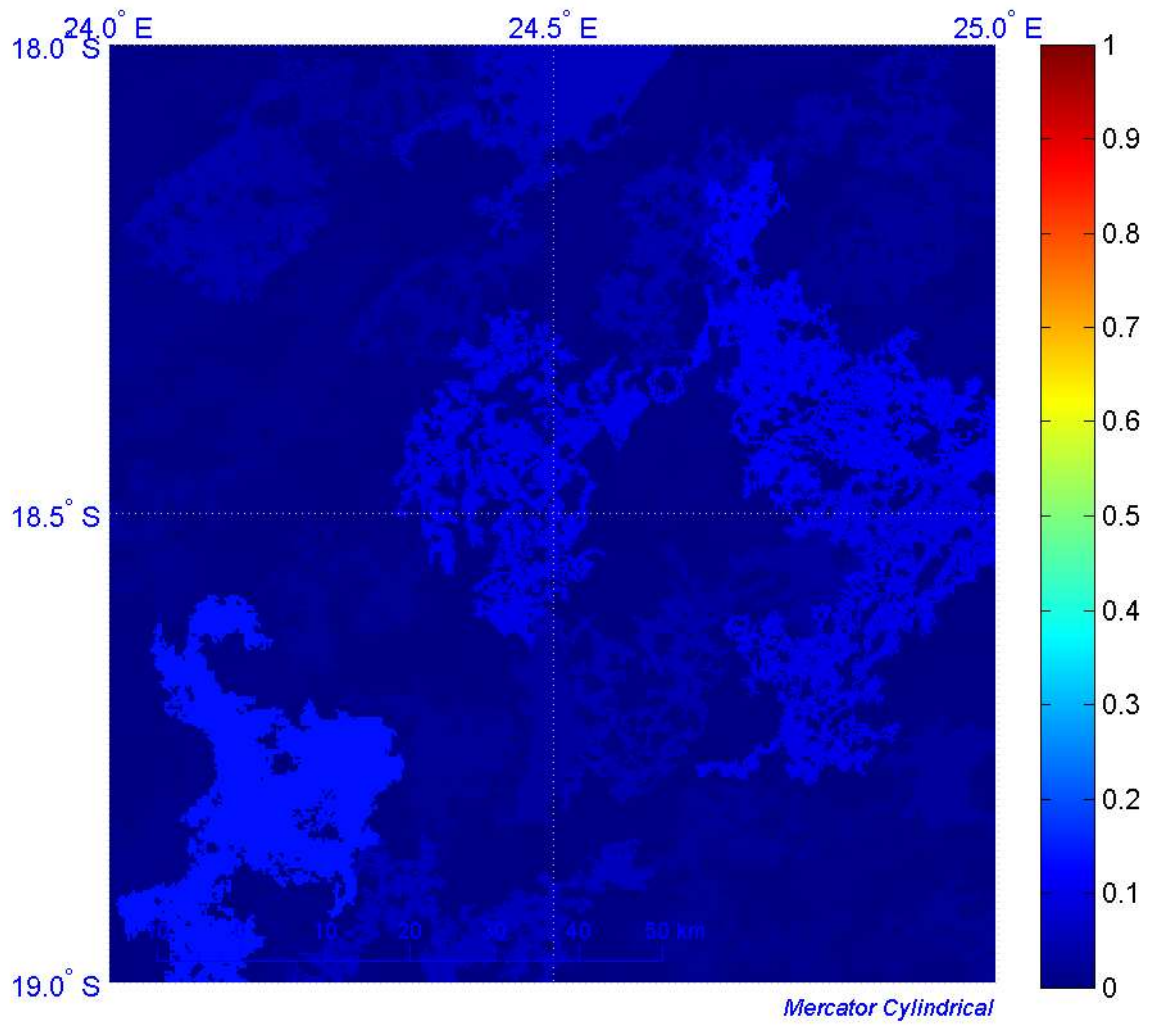


Figure 5

Patch Area in 2009



All available fields

job.type	lcc
job.id	503e91ea13af5255370013de
job.hostname	GECKO
job.username	Neil
job.mode	native
job.version	0.0.0
job.copyright	2010-2012
job.status	Success
job.exception	None
job.start	30-Nov-2012 13:11:05
job.elapsed_time	27.77
job.stop	30-Nov-2012 13:11:33
args.coords	POLYGON((-18,24 -18,25 -19,25 -19,24))
args.jobid	503e91ea13af5255370013de
args.jobtitle	Development
args.jobdescription	Demo
args.jobsubmitter	neil.caithness@oerc.ox.ac.uk
gds.Geometry	Polygon
gds.SOURCE	READWKT
lcc.a5.id_11	
lcc.a5.id_14	
lcc.a5.id_20	
lcc.a5.id_30	48 %
lcc.a5.id_40	
lcc.a5.id_50	0 %
lcc.a5.id_60	3 %
lcc.a5.id_70	
lcc.a5.id_90	
lcc.a5.id_100	0 %

lcc.a5.id_110	1 %
lcc.a5.id_120	5 %
lcc.a5.id_130	13 %
lcc.a5.id_140	31 %
lcc.a5.id_150	
lcc.a5.id_160	
lcc.a5.id_170	
lcc.a5.id_180	
lcc.a5.id_190	
lcc.a5.id_200	
lcc.a5.id_210	
lcc.a5.id_220	
lcc.a5.id_230	
lcc.a5.id_250	
lcc.a9.id_11	
lcc.a9.id_14	
lcc.a9.id_20	
lcc.a9.id_30	10 %
lcc.a9.id_40	0 %
lcc.a9.id_50	11 %
lcc.a9.id_60	29 %
lcc.a9.id_70	
lcc.a9.id_90	
lcc.a9.id_100	
lcc.a9.id_110	2 %
lcc.a9.id_120	0 %
lcc.a9.id_130	26 %
lcc.a9.id_140	21 %
lcc.a9.id_150	
lcc.a9.id_160	
lcc.a9.id_170	

lcc.a9.id_180	
lcc.a9.id_190	
lcc.a9.id_200	
lcc.a9.id_210	
lcc.a9.id_220	
lcc.a9.id_230	
lcc.a9.id_250	
lcc.nc.id_11	
lcc.nc.id_14	
lcc.nc.id_20	
lcc.nc.id_30	9 %
lcc.nc.id_40	
lcc.nc.id_50	0 %
lcc.nc.id_60	1 %
lcc.nc.id_70	
lcc.nc.id_90	
lcc.nc.id_100	
lcc.nc.id_110	0 %
lcc.nc.id_120	0 %
lcc.nc.id_130	7 %
lcc.nc.id_140	21 %
lcc.nc.id_150	
lcc.nc.id_160	
lcc.nc.id_170	
lcc.nc.id_180	
lcc.nc.id_190	
lcc.nc.id_200	
lcc.nc.id_210	
lcc.nc.id_220	
lcc.nc.id_230	
lcc.nc.id_250	61 %

